

# Closet Designs with Case Studies

---

Patty Miller

Boutique Closets and Cabinetry, LLC.



# Agenda

---



- Trends
- Challenges
- Luxury for Less





# Trends

---

- Home Offices
  - Homework / Study Rooms
    - Home Gyms
    - Lighting
    - Finishes
  - Hardware and Safes
- 
- 

# Home Offices





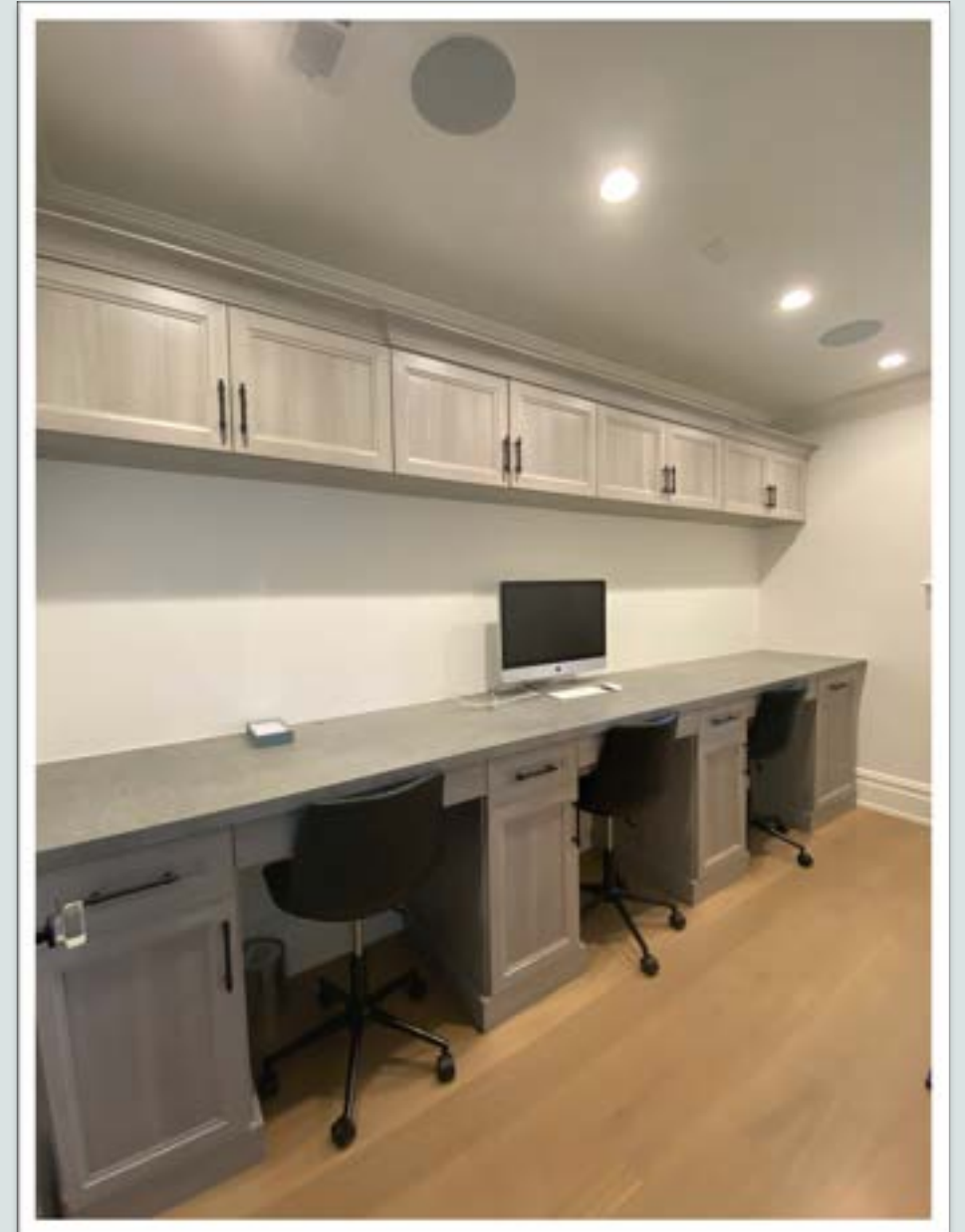




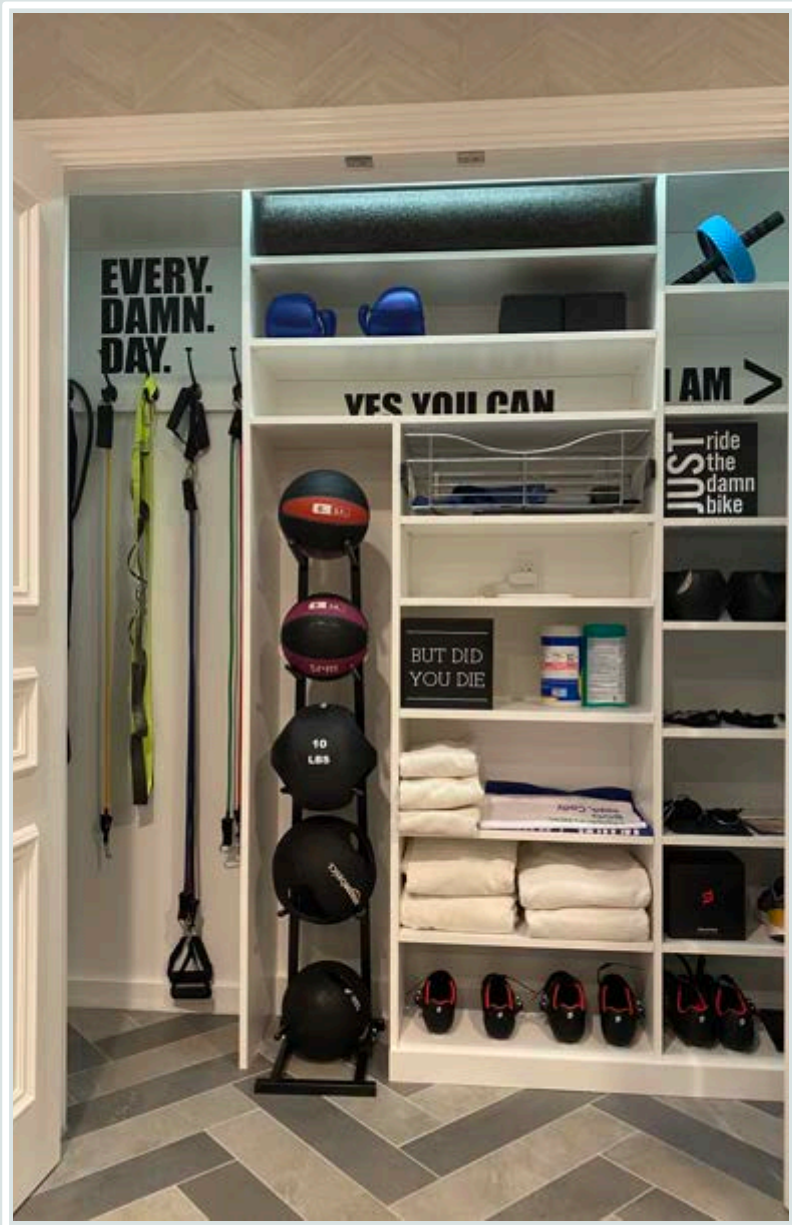
# Study Rooms

---

# Desk & Counter Height Seating







# Home Gym Storage





# Bars & Wine Cellar







# Lighting

---





LED Strip Lighting

# Up Lights, Puck Lights, Vertical & Horizontal LED Strips & Chandeliers





Try not to allow your clients  
to install their own lighting

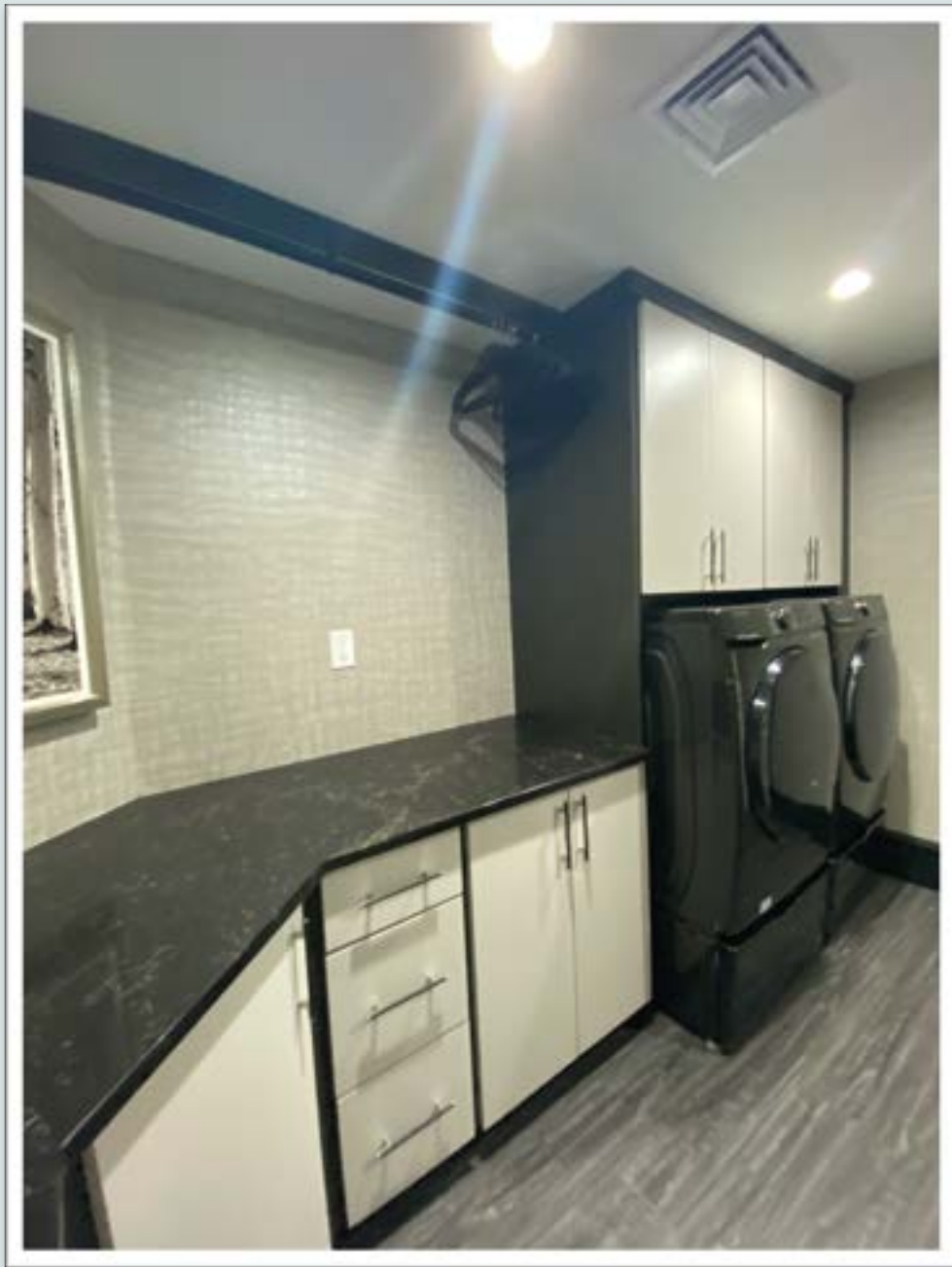




# Mixed Finishes





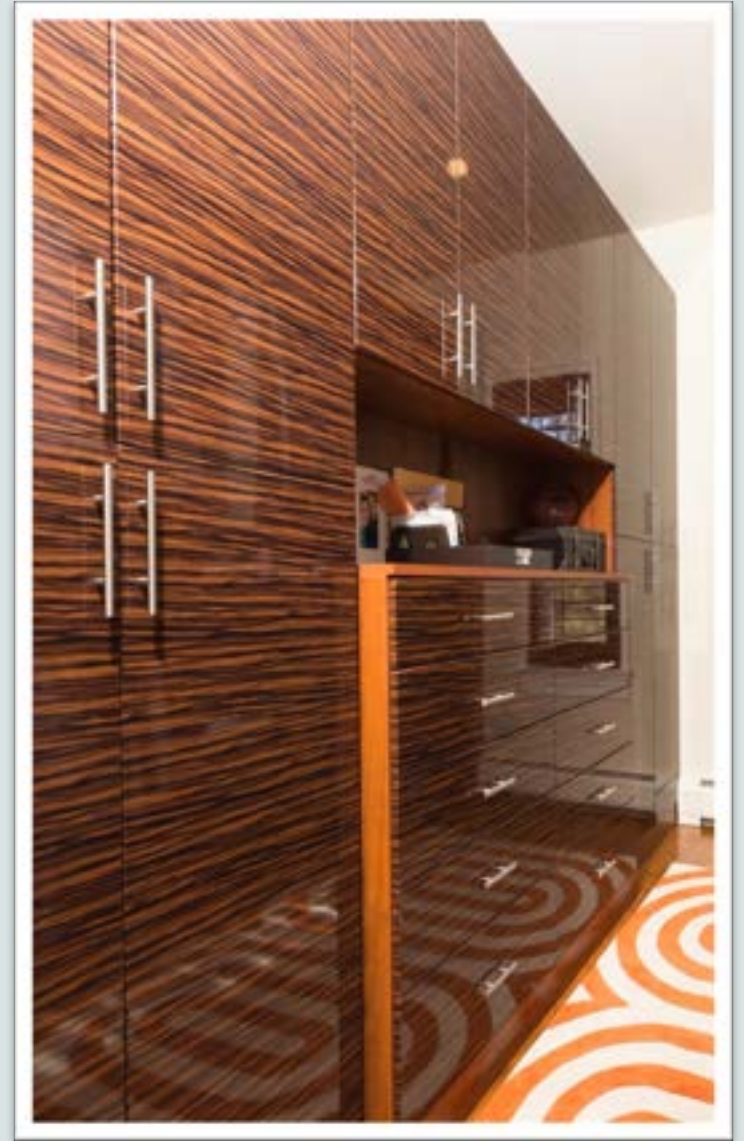






# Gloss Finishes

---





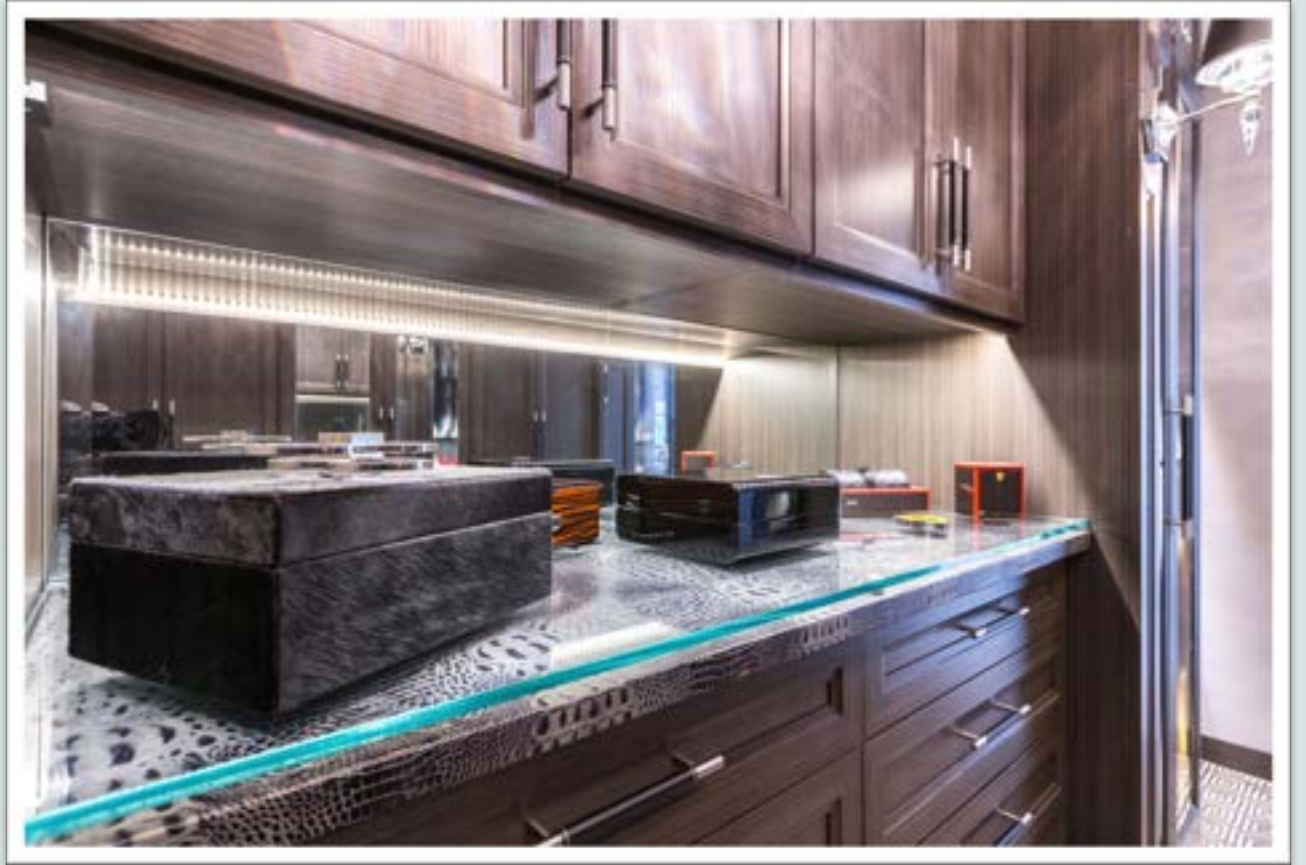
# Leather







Leather Top Under Glass



Leather Handles



Shagreen Leather Top

Crocodile Leather  
Drawer Fronts







# Exotic Stone

---





# Hardware











# Safes

---

# Large and Luxury Safes



Don't forget to  
make sure your  
client bolts their  
safe down!

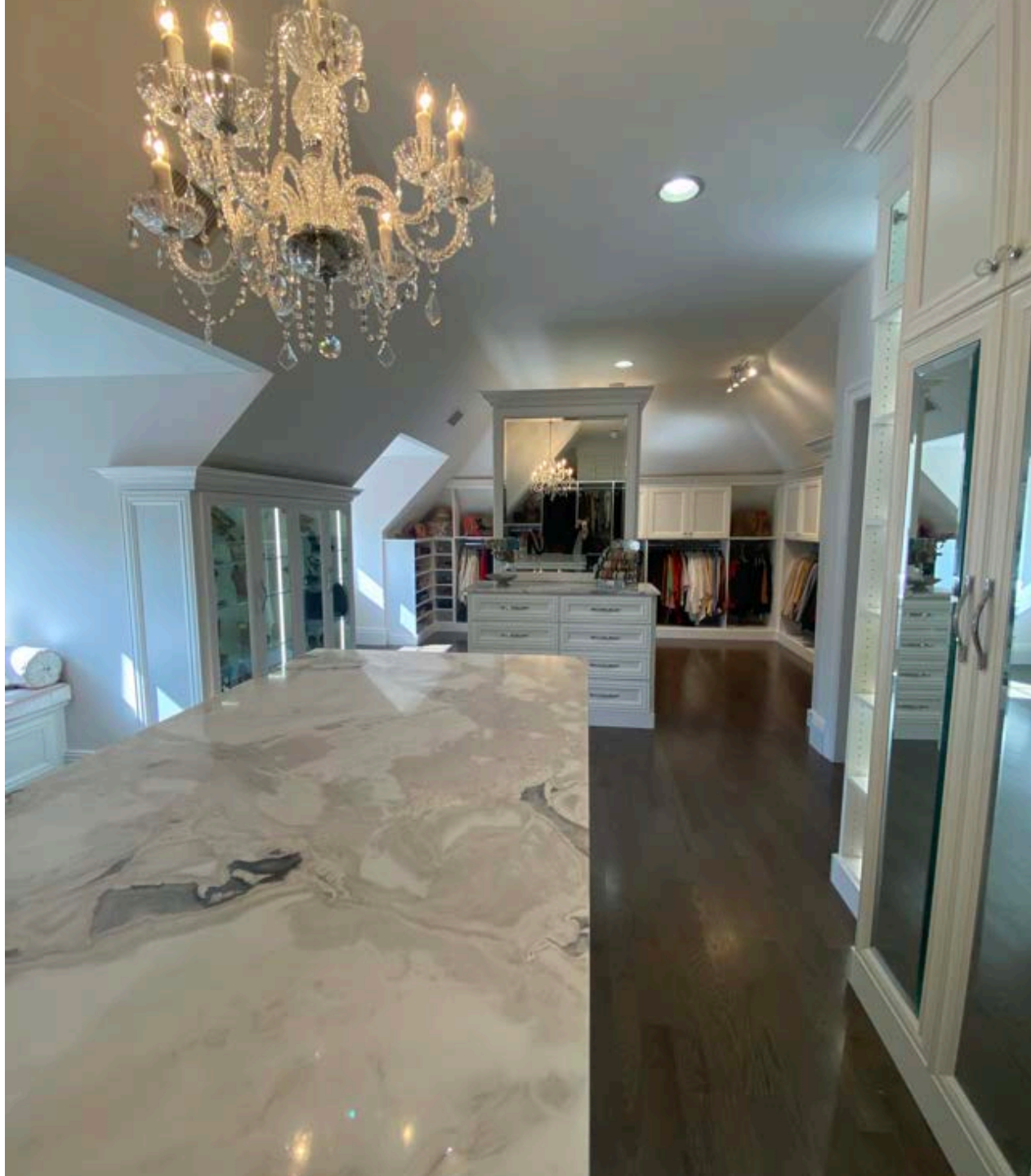




# Small Luxury Safes



# Design Challenges



Crown over 96"  
length without seams





Too many shoes... Not enough shelves



Open up a tight closet with mirror





# Shallow Shelves





# Use the Blind Corners



## Face Front Hanging



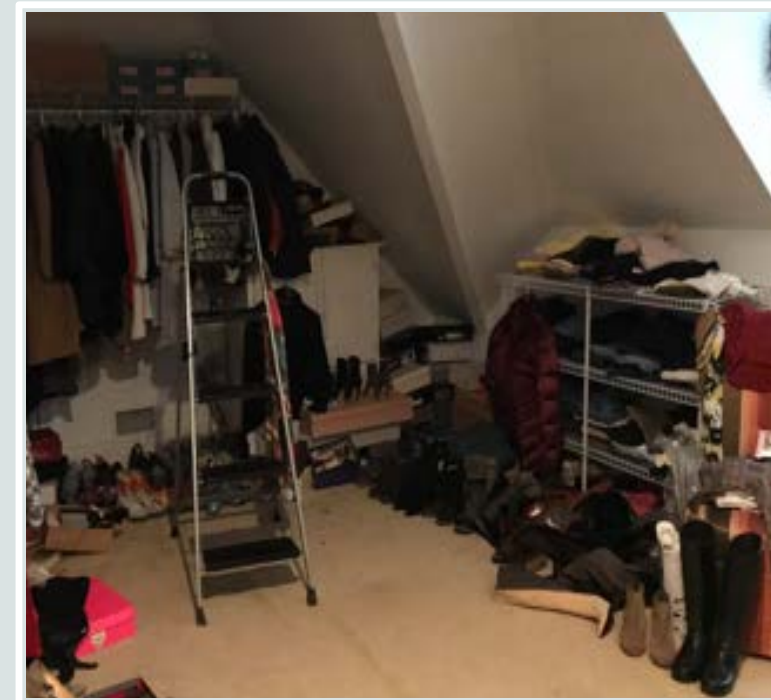


After



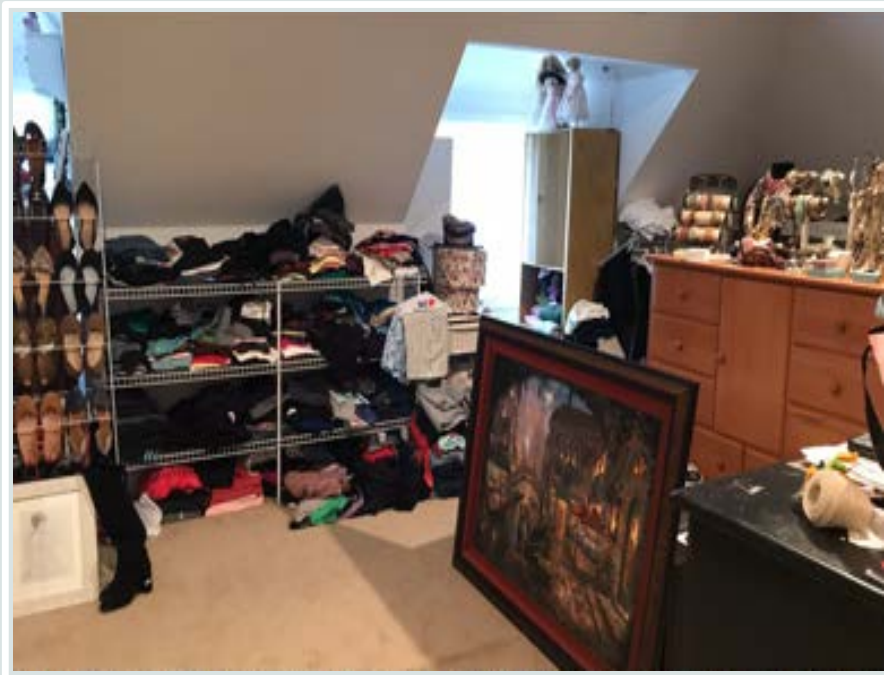
Design with  
Double Corners

Before





Before



After



# Long Closets

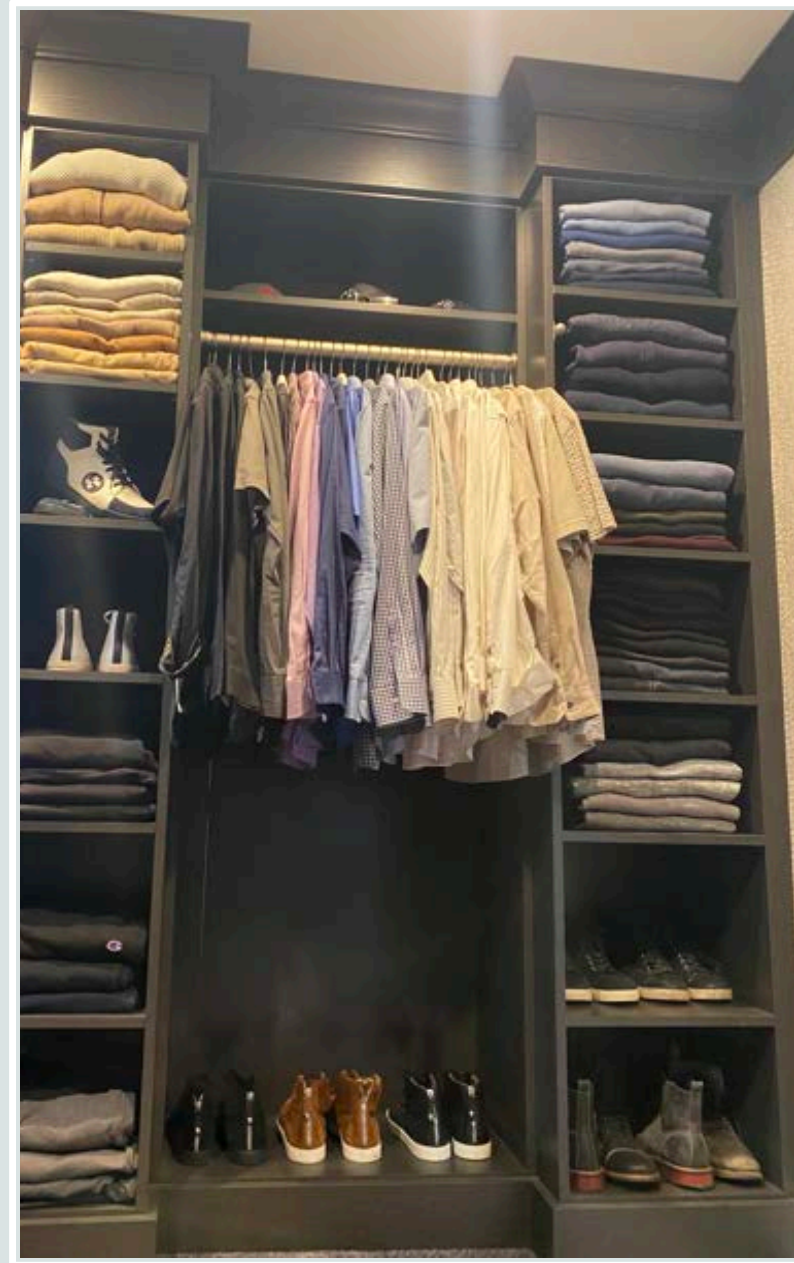








# A Secret Door Inside the Closet



## Extra Counter Space











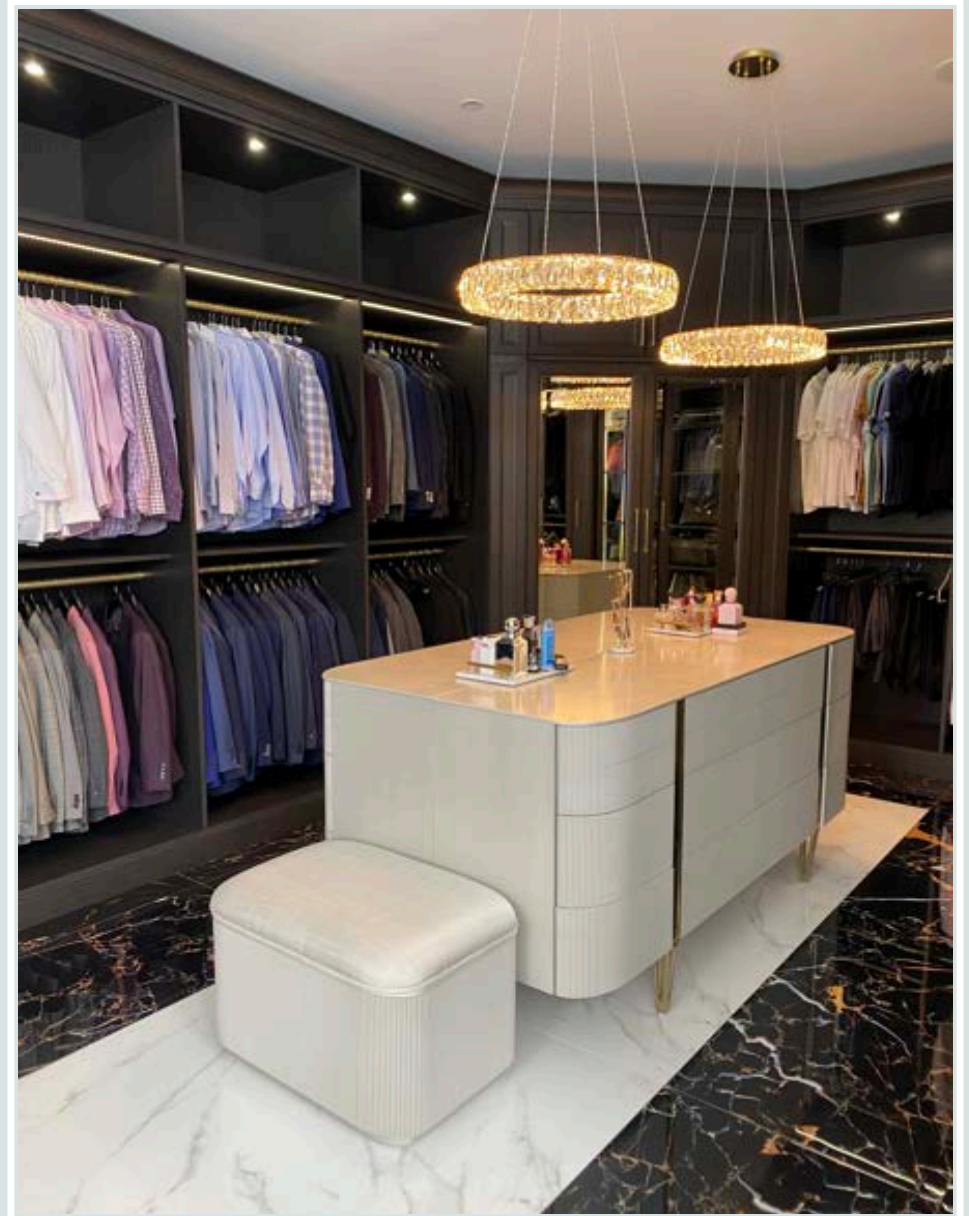
Luxury for Less

---

Accent doors and drawer fronts

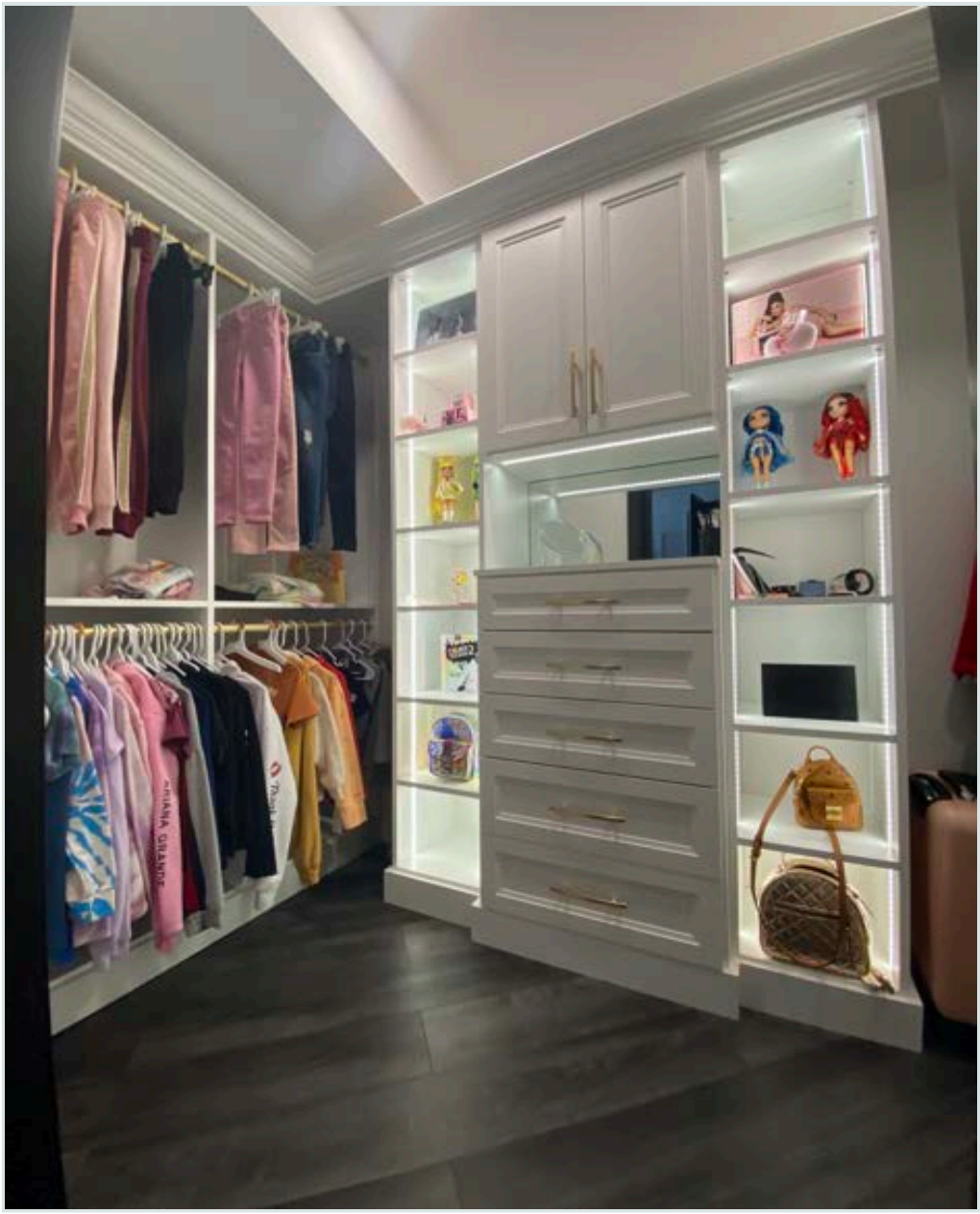


Furniture Island



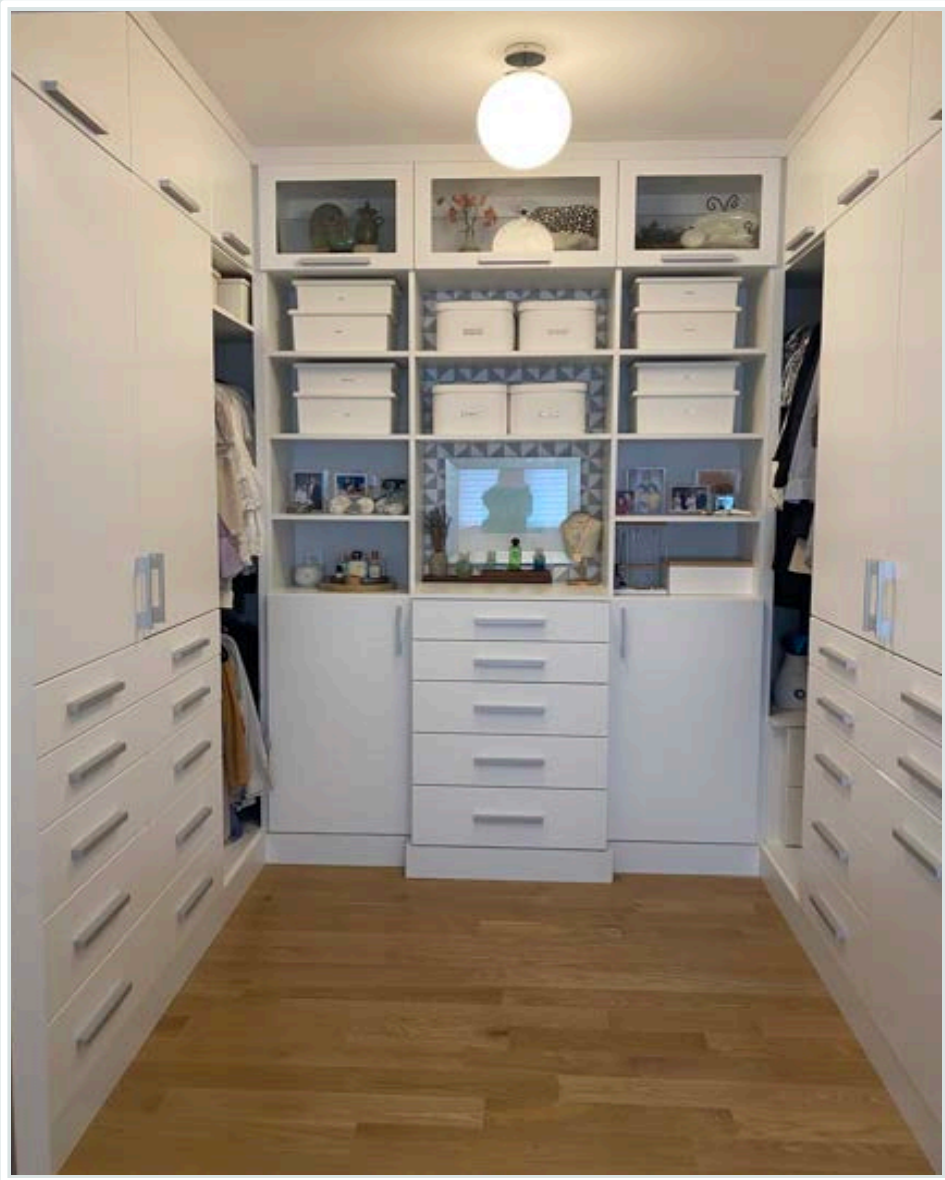


Light areas for display only





# Wall paper for backs



DO



DO

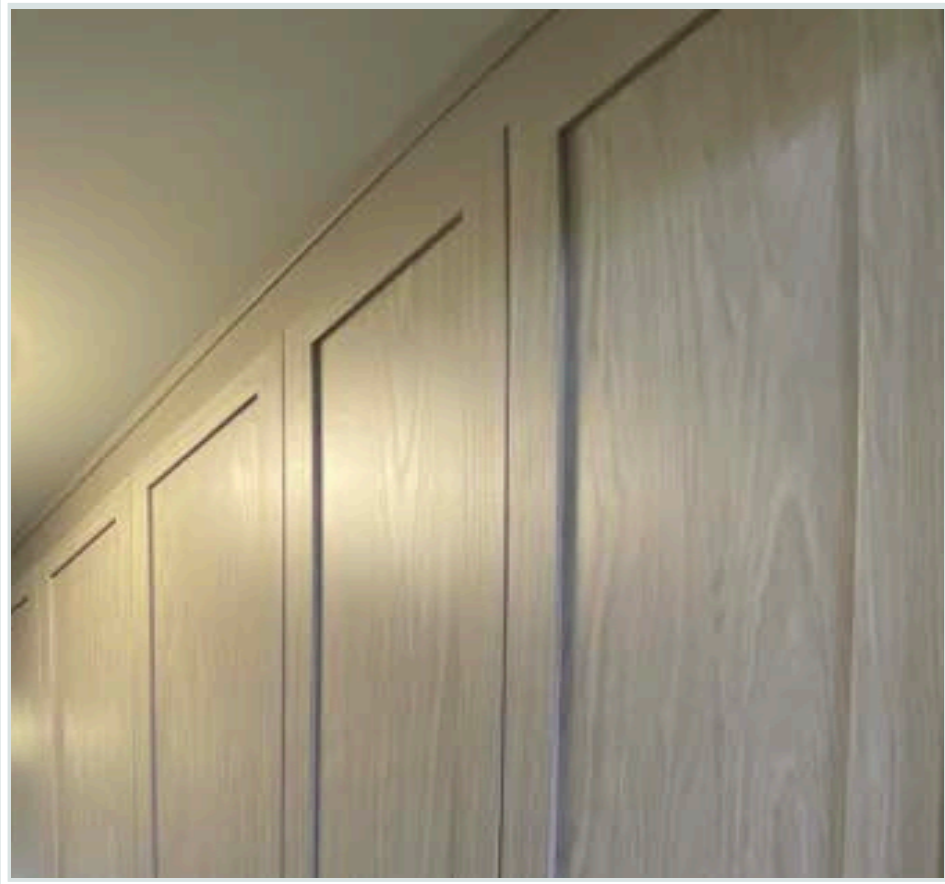


DON'T





Facia and Scribe to Ceiling



Flat Facia to Ceiling

The background of the slide is a light gray color. It is decorated with numerous stylized, light gray leaves of various shapes and sizes, some with white veins. These leaves are scattered across the left and center portions of the slide, creating a subtle, naturalistic pattern.

# Q & A

Thank you

---

Patty Miller

[patty@boutiqueclosetsandcabinetry.com](mailto:patty@boutiqueclosetsandcabinetry.com)

Boutiqueclosetsandcabinetry.com